

**LEAKS COST MONEY**



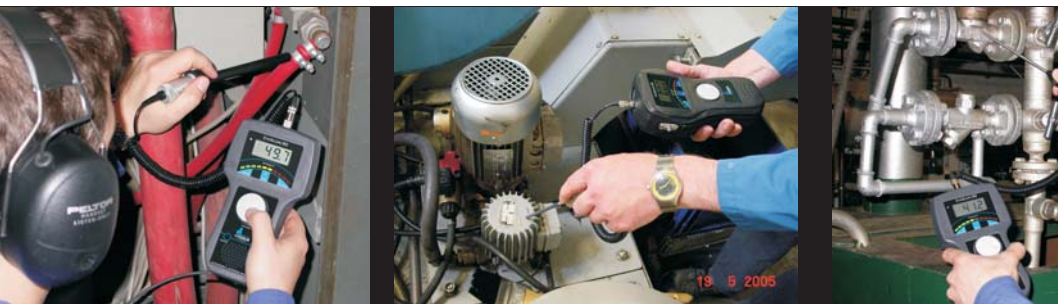
# Cygnus CygScope RD



**DIGITAL** ULTRASONIC LISTENING DEVICE

Detects leaks that cost you money easily, quickly and accurately.

A simple-to-use, low-cost yet reliable system to reduce your energy costs effectively and dramatically.



## Technology

The CygScope RD uses detection of ultrasound to allow the user to quickly and accurately find leaks in industrial machinery, faults in electrical insulation and early wear in bearings.

The friction and leakages of gases and liquids produce ultrasound. The intensity of the detected ultrasound is displayed on the LED bar graph and is made audible through either the internal loudspeaker or headphones.

In addition, the CygScope RD has a digital LCD readout to allow comparative measurements to be taken for regular maintenance checks over given periods.

## Features

- Ultrasound amplitude clearly displayed on the LCD screen and LED bar-graph.
- Equipped with a second amplification circuit, the LCD readout is independent of the LED bar-graph.
- Audio alert through built-in loudspeaker or headphones.
- The function of storing maximum value of an ultrasound signal helps locate the source of the maximum amplitude.
- Backlight switches on automatically when the ambient light is low.
- Practical, robust instrument suited to virtually all types of leak detection.
- Highly sensitive, with a large variety of probes.
- Simple to use.



## Applications

- Compressed-air or vacuum systems
- Steam Traps
- Motor and rail vehicles: test seals in cabins, doors, boot/trunk or cold storage chambers, check fuel injection in diesel engines.
- In Industry: verify steam-pipe seals, seal integrity or fittings and condenser drains, search for faults in electrical insulation, detection of early wear in bearings with rotating parts.
- Used in conjunction with contact probe, CygScope RD facilitates predictive maintenance of potential bearing failure.



## Kit contents

CygScope RD ultrasonic listening device, ultrasonic air probe C50, flexible cable, battery charger, high-quality headphones, directional tube, transportation case, leather instrument case, shoulder strap, operation and accessories manual.



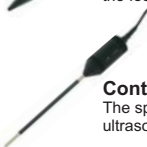
## Probe Options



**Air Probe C50** (included in standard kit)  
The air probe is the most basic method of detecting ultrasound. It can be directly connected to the testing device, or via the flexible cable.



**Directional Tube** (included in standard kit)  
To be fitted onto the air probe C50 to improve the focus of the probe.



**Contact Probe C52**  
The special contact probe is used to detect ultrasound on solid surfaces, eg noisy bearings.



**Waterproof Contact Probe C51**  
To detect gases/liquids escaping from pipes and valves.

## Telescopic Pole

The pole can extend up to 3m long to increase the reach of the user working with the air probe. The air probes are secured in a rotatable clamp and a connection is made with the socket near the clamp.



## Flexible Air Probe C53

For otherwise inaccessible locations.



## Ultrasonic Transmitter

With adjustable intensity and sound modulation for detection of defective seals.



## Specification

<b>Operation Frequency</b>	Approx. 40kHz
<b>Display</b>	Digitally on an LCD with backlight LED - scale (10 steps)
<b>Internal Loudspeaker</b>	
<b>Power Supply</b>	Rechargeable batteries with battery charger
<b>Operating Time</b>	Approx. 10 hours
<b>Charging Time</b>	Maximum 9 hours
<b>Dimensions</b>	190 x 110 x 85 mm
<b>Weight</b>	Approx. 500g
<b>Operating Temperature</b>	0°C to +40°C
<b>Storage Temperature</b>	-10°C to +50°C
<b>Protection</b>	IP 20
<b>CE Conformity</b>	EC directives and laws 89/336/EEC (electromagnetic compatibility)

Specifications are subject to change for product improvement

## Parabolic Probe C55

High sensitivity, integrated with red-dot-sight, enables reliable and precise detection up to 20m away. Background noise is ignored.





CYG S.109 ISS2

For more products, please visit our  
website [www.cygnus-instruments.com](http://www.cygnus-instruments.com)



Analogue

Intrinsically  
Safe

Datalogger



Cygnus Instruments Ltd  
Cygnus House  
30 Prince of Wales Road  
Dorchester DT1 1PW  
United Kingdom

T: +44 (0)1305 265533  
F: +44 (0)1305 269960  
E: [sales@cygnus-instruments.com](mailto:sales@cygnus-instruments.com)  
[www.cygnus-instruments.com](http://www.cygnus-instruments.com)